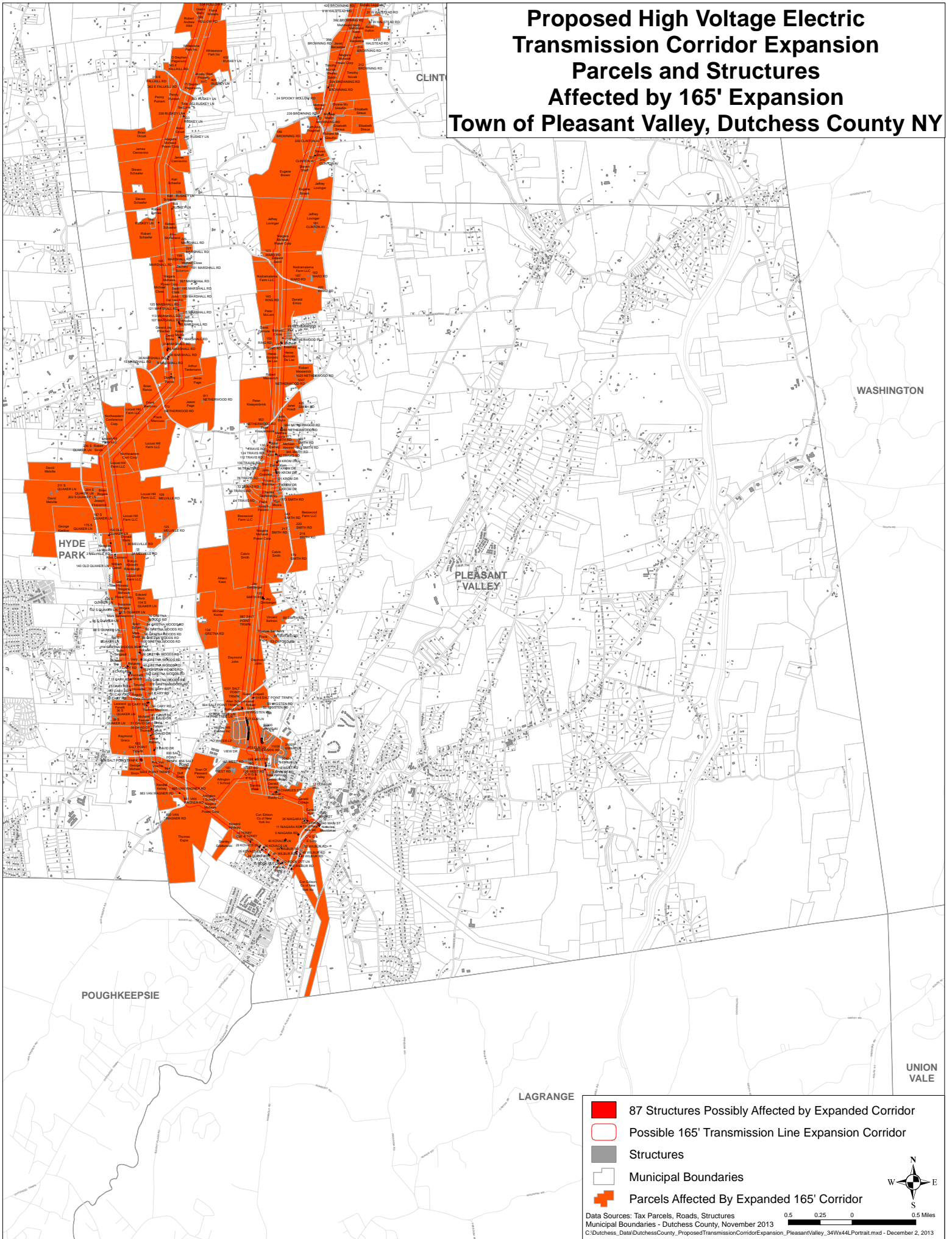


# Proposed High Voltage Electric Transmission Corridor Expansion Parcels and Structures Affected by 165' Expansion Town of Pleasant Valley, Dutchess County NY



- 87 Structures Possibly Affected by Expanded Corridor
- Possible 165' Transmission Line Expansion Corridor
- Structures
- Municipal Boundaries
- Parcels Affected By Expanded 165' Corridor

Data Sources: Tax Parcels, Roads, Structures  
 Municipal Boundaries - Dutchess County, November 2013  
 C:\Dutchess\_Data\DutchessCounty\_ProposedTransmissionCorridorExpansion\_PleasantValley\_34Wx44LPortrait.mxd - December 2, 2013

0.5 0.25 0 0.5 Miles

