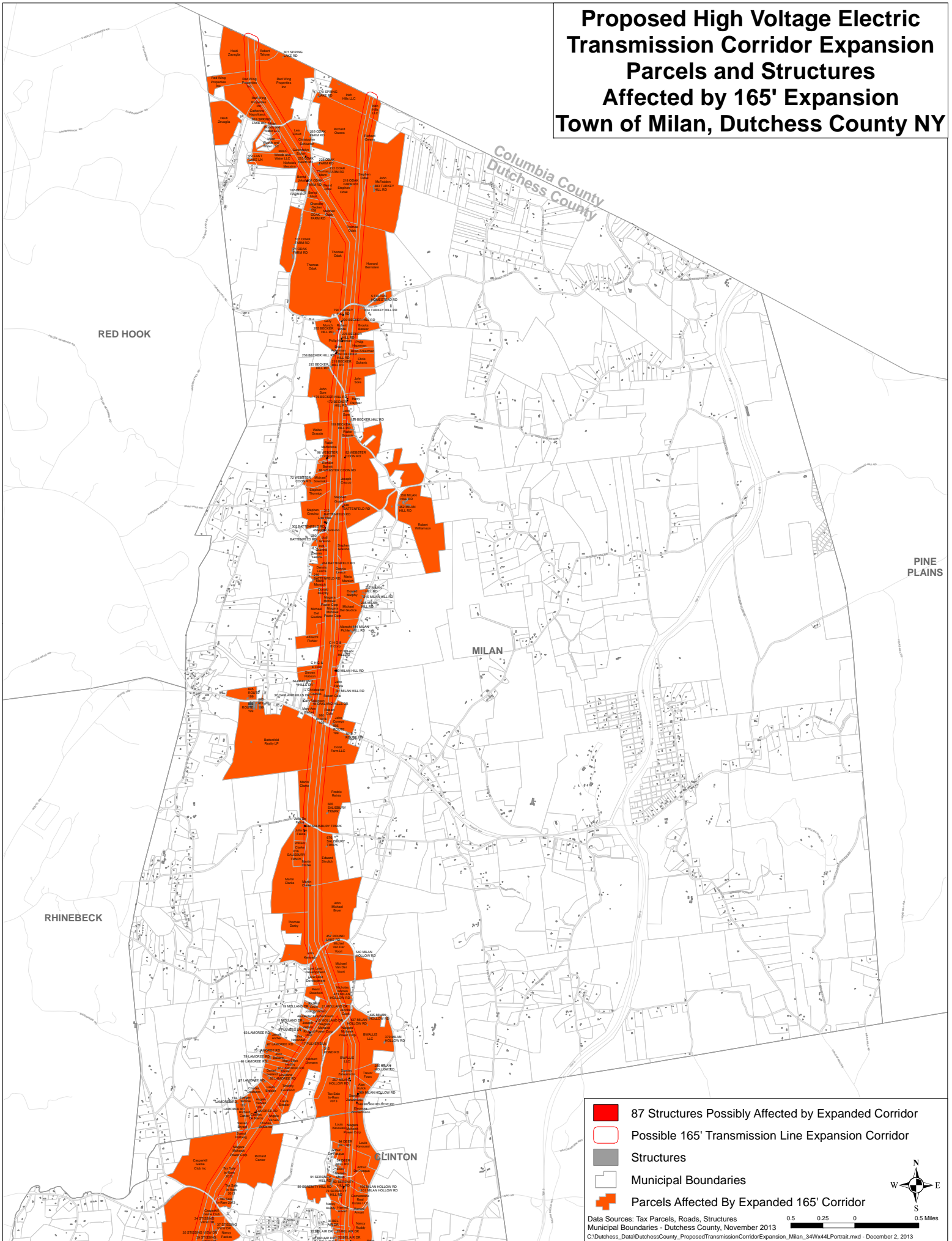


Proposed High Voltage Electric Transmission Corridor Expansion Parcels and Structures Affected by 165' Expansion Town of Milan, Dutchess County NY



- 87 Structures Possibly Affected by Expanded Corridor
- Possible 165' Transmission Line Expansion Corridor
- Structures
- Municipal Boundaries
- Parcels Affected By Expanded 165' Corridor

Data Sources: Tax Parcels, Roads, Structures
Municipal Boundaries - Dutchess County, November 2013
0.5 0.25 0 0.5 Miles
C:\Dutchess_Data\DutchessCounty_ProposedTransmissionCorridorExpansion_Milan_34Wx44LPorrait.mxd - December 2, 2013